

The logo consists of a blue square with the word "RILM" in white, and a dark blue square with the word "RESOURCES" in white.

**RILM**  
**RESOURCES**

General information:

**[rilm.org/rise](http://rilm.org/rise)**

Questions and feedback:

**[rise@rilm.org](mailto:rise@rilm.org)**

Trials and subscriptions:

**[information@ebSCO.com](mailto:information@ebSCO.com)**

# RILM Index to Scores and Collected Editions

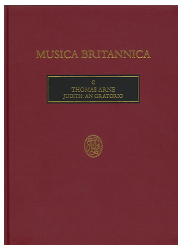
The Digital Finding Aid  
for Musical Works  
in Collections



8/2025

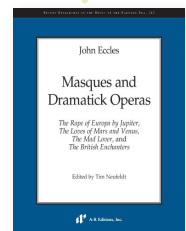
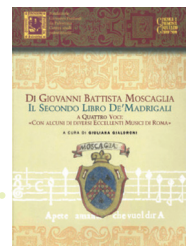
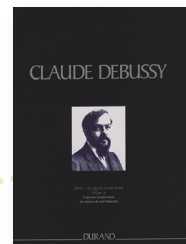
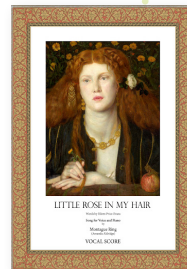
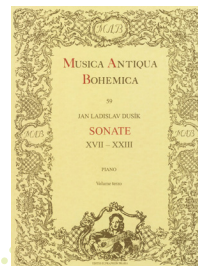
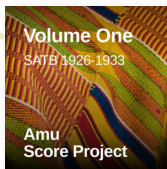
## Discover Music in Context with RISE

The *RILM Index to Scores and Collected Editions*, formerly known as the *Index to Printed Music*, remains the authoritative digital finding aid for locating individual musical works contained in collections, sets, and series. With an expanded scope beyond Western classical traditions, *RISE* includes both print and digital scores found in the complete works editions of composers, in anthologies spanning diverse historical periods and styles, and in scholarly editions from around the world.



## Always Expanding, Always Up-to-Date

*RISE* is continuously updated with new works, volumes, and editions as they are published. With nearly 600,000 expertly curated entries, *RISE* grows each year to ensure comprehensive coverage of music collections worldwide. Whether you are searching for a well-known sonata, a Nigerian chorus, or chant music from East Asia, *RISE* is your go-to resource for precise, comprehensive access.



## New and Enhanced Features

*RISE* offers advanced features for targeted discovery:

- Flexible searching by individual work or entire collection
- Preferred title access points to locate all editions of a work
- Instrumentation search to find works written for any combination of instruments and voices
- Cross-linked records for easy navigation from granular work details to entire sets and series
- Detailed volume records, including full tables of contents, series links, and publication data
- 10,000+ records with direct links to open-access scores